

Building Regulations Part M / Disability Discrimination Act

The Building Regulations Part M, in conjunction with the Disability Discrimination Act 2004, detail the need for surfaces, within the cubicle and washroom environment, to contrast visually within set parameters.

The current legislation requires that the jointing surfaces have a difference of 30 points between their Light Reflectance Value.

Responsibility lies with the customer to select decors that ensure compliance.



**CUBICLES & DOORS
COMBINED**

Preston Plywood Supplies

River Street
Off Bow Lane
Preston
PR1 8NS

Telephone

0845 180 0838

Fax

01772 561256

Manchester Panel Products

Unit 3 Deans Trading Estate
Deans Road
Swinton
Manchester M27 0RD

Telephone

0845 180 0838

Fax

0161 794 8329

Worcester Panels

Holden & Charlotte Works
New Road
Persore
Worcestershire WR10 1BY

Telephone

0845 180 0838

Fax

01386 561 952

HPL COLOUR OPTIONS

The Cubicle Collection is available in a selection of plain colours with complementary speckle effects and Legni finishes. The laminate has been specially selected for applications in areas of heavy usage or vandalism. It's decorative surface with an easy-to-clean texture is enhanced by the solid black core offered as a standard feature of this collection.

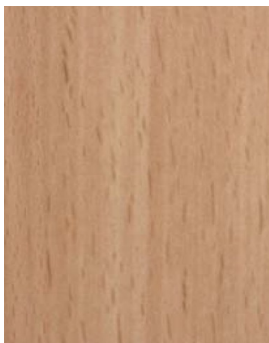
The sheet size of 3660x1610 is available in 0.8mm post-forming and 12mm solid grade making it a durable, versatile and economical product resistant to vandalism, impact and water. The 12mm thickness

ensures that the laminate can be used in conjunction with the majority of available fittings and fixing systems.

The Cubicle Collection is particularly recommended for use in schools, leisure centres, swimming pools and high traffic public areas, such as airports, stations, and places of entertainment. Other recommended uses include hospitals, laboratories and food preparation areas where wood cores and joints are unacceptable for health reasons.



1677 • Light Maple • Sei



1666 • American Beech • Sei



1637 • Marine Pear • Sei



312 • Wenge • Sei



1354 • Zebrano • Sei



635 • Olive • Sei



563 • Mid Grey Minimi • Mandarin



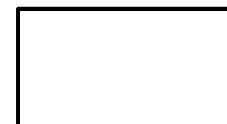
567 • Light Grey Minimi • Mandarin



431 • Red • Lucida 2

Colours are as near as possible within the printing process.

Key: Ref code • Colour • Finish



410 • Ice White • Sei



421 • Black • Sei



406 • Spring White • Sei



236 • Spring White Speckle • Sei



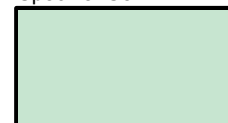
813 • Beige Manhattan • Sei



9434 • Beige Manhattan Speckle • Sei



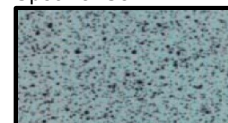
810 • Mini White • Sei



454 • Caribbean Green • Sei



444 • Sage Green • Sei



9951 • Green Speckle • Sei



839 • Green Water • Sei



460 • Green Grass • Sei



441 • Green Citron • Sei



860 • Yellow Piper • Sei



861 • Yellow Pop • Sei



823 • Tango Red • Sei



431 • Red • Sei



427 • Fuschia • Sei



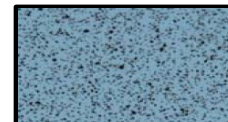
828 • Baby Pink • Sei



425 • Lilac Erica • Sei



801 • Blue Tempest • Sei



9949 • Blue Tempest Speckle • Sei



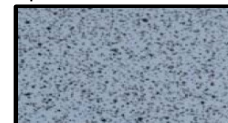
838 • Primary Blue • Sei



857 • Heavenly Blue • Sei



858 • Blue Lilac • Sei



9950 • Blue Lilac Speckle • Sei



859 • Blue Pottery • Sei



487 • Blue Dust • Sei



478 • Light Grey • Sei



9947 • Light Grey Speckle • Sei



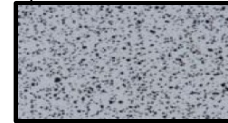
870 • Grey Cloud • Sei



879 • Graphite Grey • Sei



477 • Grey • Sei



9945 • Grey Speckle • Sei