


High Pressure Laminate
Compact Grade Laminate
MR Melamine Faced Chipboard



Plain Colours



Woodgrains



Patterns

Cubicle & Washroom Collection



PEFC accredited decorative panel products

thermopal

Introducing the PEFC accredited
Thermopal range of decorative panelling products.

thermopal

You can create a stunning, cost effective space with three distinct Thermopal panel product grades that on the surface appear identical.



Compact Grade Laminate

- PEFC accredited
- Strong solid grade panels for the toughest environments
- Meeting the requirements of BS EN 438
- Both sides of all designs have a protective coating film
- Virtually waterproof – perfect for washrooms
- Black edge can be machined to any profile
- All CGL designs colour and texture match HPL & MFC panels
- 1 efficient sheet size.

2750mm x 1860mm x 12mm



High Pressure Laminate

- PEFC accredited
- Postforming grade panels for seamless curved shapes
- Meeting the requirements of BS EN 438
- All designs have a protective coating film
- A choice of core material grades & thicknesses
- Bonded panels can be edge sealed with colour matched ABS
- All HPL designs colour and texture match CGL & MFC panels
- 3 sheet sizes for efficiency and flexibility.

3660mm x 2020mm x 0.8mm
2750mm x 2020mm x 0.8mm
1830mm x 2020mm x 0.8mm



Melamine Faced Chipboard

- PEFC accredited
- Meeting the requirements of BS EN 14322
- All deep colour designs have a protective coating film
- Moisture resistant grade panels
- Suitable for reasonably dry and low impact areas
- Perfect for projects that need a low cost solution
- Panels can be edge sealed with colour matched ABS
- All MFC designs colour and texture match CGL & HPL panels
- 1 efficient sheet size.

2750mm x 2050mm x 19mm

Silver Grey

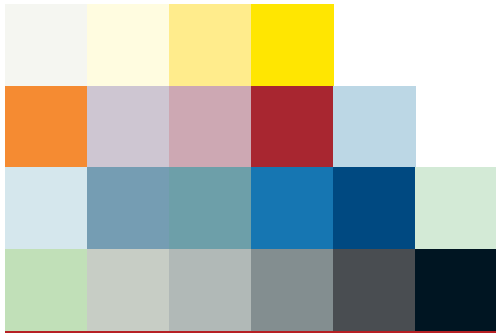


Thermopal CGL, HPL, and MFC each have unique performance characteristics, but as they share the same colours and textures, they can be used together to cost effectively fit the demands of your project.



PEFC accredited decorative panel products

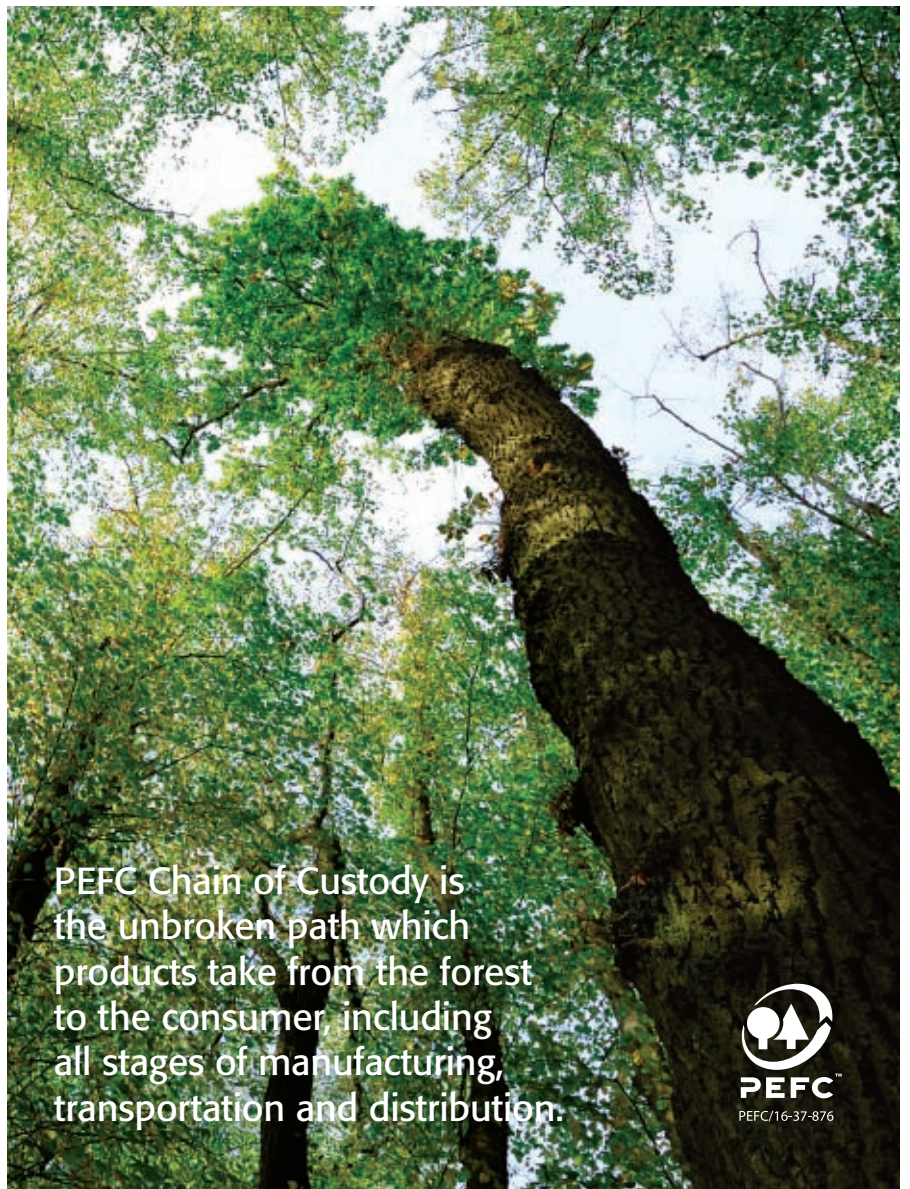
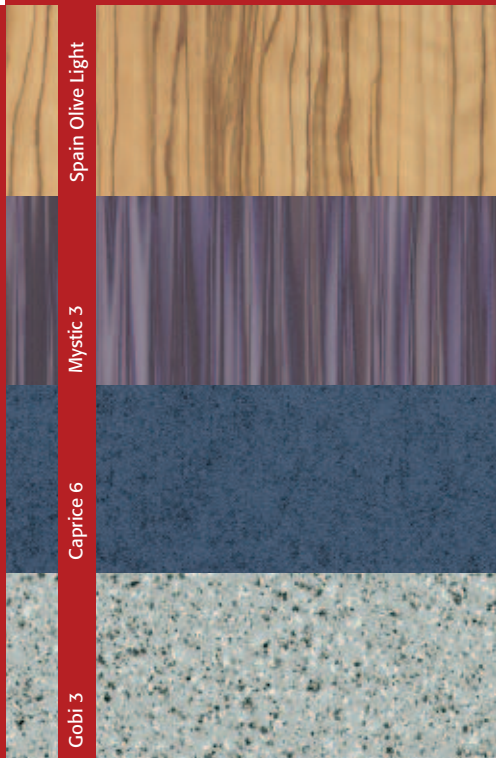
PEFC/16-37-876



Plain Colours, Patterns and Woodgrains

There are no limits to your imagination. But it's a shame if it all comes to nothing because of a lack of the right design. With Thermopal plain colours, patterns and wood reproductions you can be sure your ideas will come true.

All plain colours, patterns and wood reproductions are available from stock for immediate delivery.



PEFC Chain of Custody is the unbroken path which products take from the forest to the consumer, including all stages of manufacturing, transportation and distribution.



The PEFC Scheme

Programme for the Endorsement of Forest Certification schemes – an international forest certification system that ensures that the raw materials used in the production of all Thermopal decorative panel products are from sustainable origins. Thermopal's PEFC accredited distribution and fabrication partners maintain a Chain of Custody that ensures Thermopal's decorative panelling products are environmentally sustainable right through to the final installation.

Chain of Custody

Chain of Custody Certification offers independent verification of the 'truth' of product labelling and re-assures purchasers, all along the chain of supply, that a wood product bearing a label conforms to the claims being made on that label.

Benefits to Customers

You will be supporting responsibly managed forests worldwide - the PEFC mark enables our customers to choose forest products which are not contributing to the destruction of the world's forests, by buying from certified sources you are providing an incentive for responsible forest management.

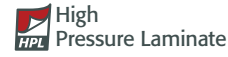
Thermopal hold stock in both non PEFC material (from our original stocks) and PEFC material. Please specify with each order whether you require PEFC or non PEFC materials.

Decor availability chart

 <p>Royal White SR209</p> 	 <p>Ivory U131</p> 	 <p>Sunflower U192</p> 
 <p>Zinc Yellow U194</p> 	 <p>Orange U032</p> 	 <p>Rose U162</p> 
 <p>Ruby U163</p> 	 <p>Chilli U055</p> 	 <p>Ice Blue U148</p> 
 <p>Pastel Blue U067</p> 	 <p>Dark Pastel Blue U283</p> 	 <p>Pacific U079</p> 
 <p>Sky Blue U068</p> 	 <p>Gentian Blue U059</p> 	 <p>Pastel Green U186</p> 
 <p>Sage U046</p> 	 <p>Mid Grey U036</p> 	 <p>Silver Grey U009</p> 



Performance Grade Availability Key:



Platin Grey
U010



Slate Grey
U231



Graphite Black
U007



Natural Planked Maple
F04/020



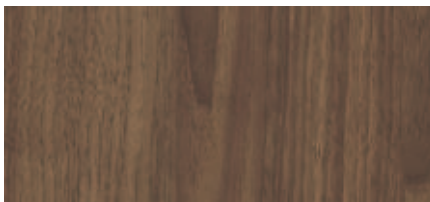
Spain Olive Light
F21/005



Bloomed Beech
F37/010



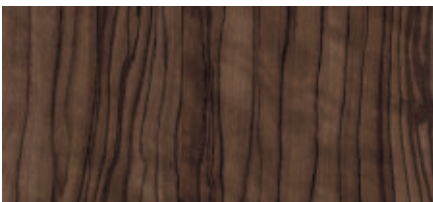
Striped Oak Milano
F06/159



Albany Walnut Dark
F26/031



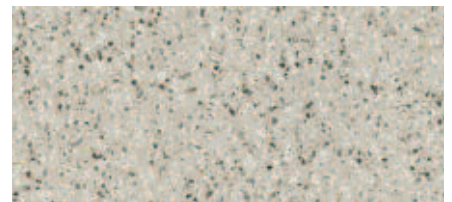
Milano Oak Choco
F06/162



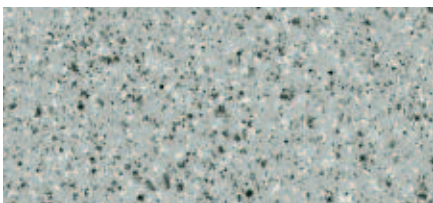
Spain Olive Dark
F21/007



Sahara 2



Gobi 2



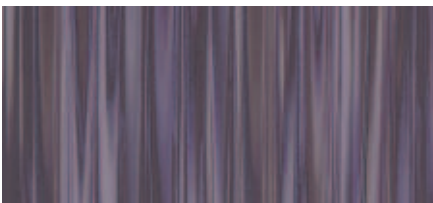
Gobi 3



Mystic 1



Mystic 2



Mystic 3



Caprice 6



Sahara 5



Thermopal panelling for the washroom

Thermopal panels are able to deliver excellent washroom solutions that won't cost the earth.

Thermopal and the Environment

Our world is increasingly conscious of the environment and is seeking sustainability and the avoidance of waste.

The sustainable origin and the subsequent chain of custody of the wood materials that are used in the manufacture of the Thermopal panel product range is assured by Thermopal's PEFC accreditation.

The synthetic resins used in Thermopal products are stable and chemically inert, enabling their safe use in industrial furnaces where they can be converted into heat energy.

The surface design inks are heavy metal free.

The excellent whole life value of Thermopal materials means that if properly selected and maintained, these products will look good for many years, thus avoiding wasteful and expensive refurbishments.

Environmental Management

Our products conform to, and are compatible with EN ISO 9001 14001, an internationally accepted Environmental Management accreditation.

Cleaning and Maintenance

The Thermopal range of decorative panels and fascias are designed to withstand the regular cleaning regimes that are essential to washroom maintenance and hygiene.

Thermopal CGL and HPL

These products are easy to keep clean and in most cases, wiping down the panel with warm water and a mild cleaning agent is adequate. In high usage environments, CGL and HPL can be cleaned with aggressive disinfectants and a pressure washer if necessary. Graffiti can be cleaned off using the standard organic solvents (e.g. Acetone) without any effect on panel colour.

Thermopal MFC

Should it be necessary, these panels can be cleaned with non abrasive cleaning materials and disinfectants although in most cases warm water and a mild detergent will keep the panels clean and hygienic.

When cleaning ABS edging, avoid solvents or highly alcoholic cleaning agents.

Specifications

Relevant NBS Clauses

K13 Rigid Sheet fine linings / panels

K30 Panel Partitions

K32 Panel Cubicles

L20 Doors

N10 General Fixtures & Fittings

Access to Public Buildings Disability Discrimination Act. (2004)

Washroom specifications are affected by the Access to Public Buildings (2004) Disability Discrimination Act in two particular areas:-

Cubicle dimensions for the disabled

The Thermopal product range is available in large sheet sizes to facilitate compliance with the Act which specifies that there should be at least a 450mm gap between an in – swinging toilet cubicle door and the adjacent toilet pan.

Visual awareness

To assist the partially sighted there should be a visual contrast between adjacent surfaces in the washroom. This is measured by the Light Reflective Value (LRV) of colours, as shown on the Thermopal product availability chart opposite. For example, black has an LRV of 7 and white is 81. To ensure adjacent surfaces such as doors and pilasters are easily detected, the Act specifies that there should be a visual contrast of more than 30 LRV points between the two surface colours.

Spain Olive Dark with Royal White



PEFC
PEFC/16-37-876

PEFC accredited decorative panel products

Product availability

Decor Ref	Name	LRV					NCS
			12mm 2750 x 1860mm	0.8mm 1830 x 2020mm 2750 x 2020mm 3660 x 2020mm	19mm 2750 x 2050mm	150m Roll 23 x 2mm	
Plain Colours							
Pearl Finish 47							
U055	Chilli	14	•	•	•	•	3860-Y91R
U283	Dark Pastel Blue	35	•	•	•	•	2626-R88B
U059	Gentian Blue	10	•	•	•	•	4641-R86B
U007	Graphite Black	7	•	•	•	•	8401-R82B
U148	Ice Blue	61	•	•	•	•	1215-R81B
U131	Ivory	78	•	•	•	•	0704-Y17R
U036	Mid Grey	60	•	•	•	•	1901-B95G
U032	Orange	34	•	•	•	•	1465-Y39R
U079	Pacific	38	•	•	•	•	3020-B10G
U067	Pastel Blue	71	•	•	•	•	0715-R96B
U186	Pastel Green	76	•	•	•	•	0710-G13Y
U010	Platin Grey	31	•	•	•	•	4502-B
U162	Rose	52	•	•	•	•	2109-R37B
SR209	Royal White	81	•	•	•	•	0601-Y06R
U163	Ruby	46	•	•	•	•	2018-R24B
U046	Sage	60	•	•	•	•	1320-G30Y
U009	Silver Grey	47	•	•	•	•	2603-R89B
U068	Sky Blue	20	•	•	•	•	3047-R88B
U231	Slate Grey	10	•	•	•	•	7203-R84B
U192	Sunflower	74	•	•	•	•	0631-Y01R
U194	Zinc Yellow	65	•	•	•	•	0760-G99Y
Woodgrains							
Soft Finish 49							
F26/031	Albany Walnut Dark	16	•	•	•	•	
F37/010	Bloomed Beech	34	•	•	•	•	
F06/162	Milano Oak Choco	10	•	•	•	•	
F04/020	Natural Planked Maple	61	•	•	•	•	
F21/007	Spain Olive Dark	11	•	•	•	•	
F21/005	Spain Olive Light	40	•	•	•	•	
F06/159	Striped Oak Milano	40	•	•	•	•	
Patterns							
Pearl Finish 47							
	Caprice 6	15	•	•	•	•	
	Gobi 2	53	•	•	•	•	
	Gobi 3	48	•	•	•	•	
	Mystic 1	18	•	•	•	•	
	Mystic 2	19	•	•	•	•	
	Mystic 3	14	•	•	•	•	
	Sahara 2	45	•	•	•	•	
	Sahara 5	10	•	•	•	•	

Thermopal GmbH

Thermopal has its headquarters and manufacturing facilities based on a 190,000m² site in the alpine region of Germany's Allgäu. Thermopal successfully designs and manufactures innovative high pressure decorative laminates and decorative particle boards, winning the prestigious red dot award for the Company's avant-garde designs. Thermopal supplies all sectors of the world's construction and transport industries, exporting over 50% of its production.

Thermopal produces all three cubicle and washroom panelling materials (HPL + CGL + MFC) in one central manufacturing facility, which ensures total quality control of colour and texture matching.

CUBICLES&DOORS COMBINED

Cubicles and Doors Combined

Unit 3, Deans Trading Estate, Deans Road
Swinton, Manchester M27 0RD

Telephone: 0845 180 0656

Fax: 0161 794 8329

Email: sales@cubiclesanddoors.co.uk

www.cubiclesanddoors.co.uk



Whilst every effort has been made to ensure that colours are accurately represented in this brochure, we are unable to guarantee an exact match due to the limitations of the brochure printing process.

Thermopal GmbH has a policy of continuous development. We therefore reserve the right to amend product specifications without notice. All sizes shown are nominal. E&OE.

Thermopal GmbH

Wurzacher Straße 32, 88299 Leutkirch im Allgäu, Germany

Thermopal UK Distribution Centre

Tel: 0121 561 3939 Fax: 0800 634 0114

www.thermopal.co.uk



Mixed Sources

Product group from well-managed forests, controlled sources and recycled wood or fiber

www.fsc.org Cert no. XXX-XXX-XXXX
© 1996 Forest Stewardship Council