

Building Regulations Part M / Disability Discrimination Act

The Building Regulations Part M, in conjunction with the Disability Discrimination Act 2004, detail the need for surfaces, within the cubicle and washroom environment, to contrast visually within set parameters.

The current legislation requires that the jointing surfaces have a difference of 30 points between their Light Reflectance Value.

Responsibility lies with the customer to select decors that ensure compliance.



**CUBICLES & DOORS
COMBINED**

Preston Plywood Supplies

River Street
Off Bow Lane
Preston
PR1 8NS

Telephone

0845 180 0838

Fax

01772 561256

Manchester Panel Products

Unit 3 Deans Trading Estate
Deans Road
Swinton
Manchester M27 0RD

Telephone

0845 180 0838

Fax

0161 794 8329

Worcester Panels

Holden & Charlotte Works
New Road
Persore
Worcestershire WR10 1BY

Telephone

0845 180 0838

Fax

01386 561 952

COLOUR GUIDE



A 014 - Aigue-Marine
HPL, SGL, MFC LV 0.73



A 036 - Amandine
HPL, SGL, MFC LV 0.58



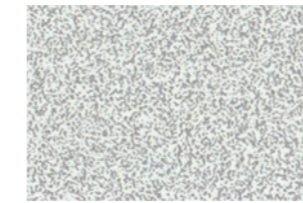
A 057 - Aulne Naurel
HPL, SGL LV 0.43



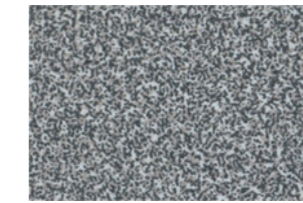
B 001 - Bleu Flash
HPL, SGL, MFC LV 0.15



J 018 - Jaune Gouache
HPL LV 0.64



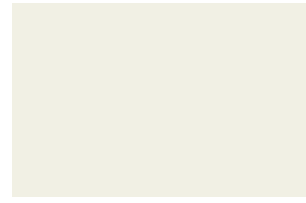
M 001 - Maryland Clair
HPL, SGL, MFC LV 0.55



M 002 - Maryland Moyen
HPL LV 0.27



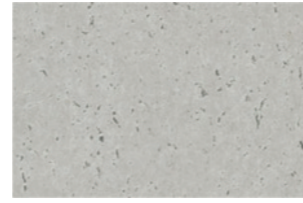
M 003 - Maryland Fonce
HPL, SGL, MFC LV 0.13



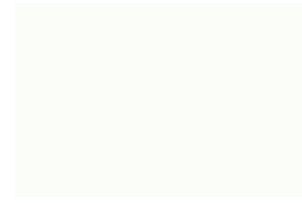
B 015 - Blanc Menuires
HPL, SGL, MFC LV 0.87



B 048 - Bleu Oslo
HPL, SGL, MFC LV 0.52



B 057 - Beton Naturel
HPL, SGL, MFC LV 0.48



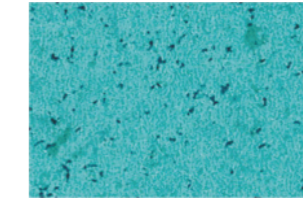
B 070 - Blanc Megeve
HPL LV 0.83



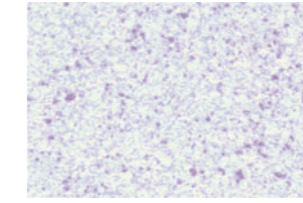
M 047 - Mousse
HPL, SGL, MFC LV 0.34



M 077 - Myriade Jaune
HPL, SGL, MFC LV 0.58



M 079 Myriad Vert
HPL, SGL, MFC LV 0.28



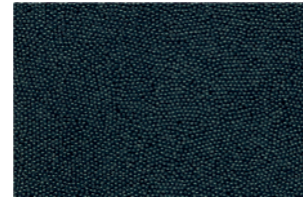
N 022 - Nova Lilas
HPL, SGL, MFC LV 0.54



B 086 - Bleu Caraibes
HPL, SGL, MFC LV 0.10



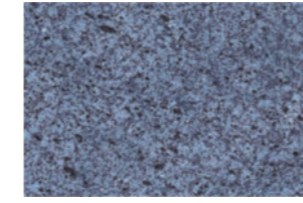
B 101 - Banian Noirci
HPL LV 0.01



C 011 - Caviar
HPL, SGL, MFC LV 0.10



C 017 - Coquille d'Oeuf
HPL, SGL, MFC LV 0.68



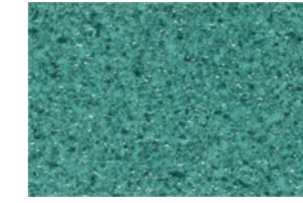
N 023 - Nova Saphir
HPL, SGL, MFC LV 0.23



N 026 - Noyer Ombre
HPL, SGL LV 0.17



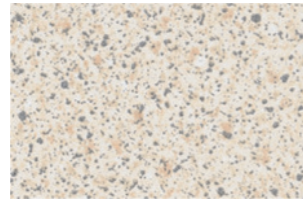
N 027 - Noyer Venitien
HPL, SGL LV 0.30



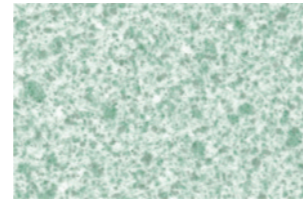
N 028 - Nova Mousse
HPL, SGL, MFC LV 0.33



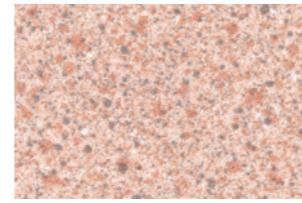
C 018 - Chardon
HPL, SGL LV 0.19



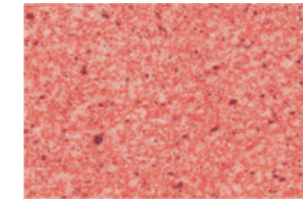
C 030 - Cosmic Beige
HPL, SGL, MFC LV 0.57



C 031 - Cosmic Vert
HPL, SGL, MFC LV 0.59



C 032 - Cosmic Rose
HPL, SGL, MFC LV 0.57



N 049 - Nova Argile
HPL, SGL, MFC LV 0.31



P 053 - Petale de Rose
HPL LV 0.75



P 067 - Poirier Naturel
HPL LV 0.35



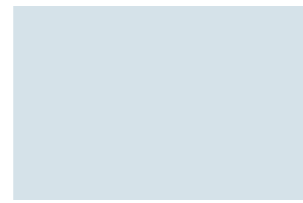
R 021 - Rose Tendre
HPL LV 0.58



C 062 - Capucine
HPL, SGL, MFC LV 0.19



E 028 - Erable Nordique
HPL, SGL LV 0.51



F 008 - Fumee
HPL, SGL, MFC LV 0.68



G 003 - Gris Perle
HPL, SGL, MFC LV 0.41



R 036 - Rouge Cerise
HPL, SGL LV 0.13



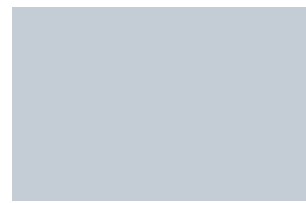
V 011 - Vert d'Eau
HPL, MFC LV 0.66



V 014 - Vinyle
HPL, MFC LV 0.37



V 032 - Vega Noir
HPL, SGL LV 0.11



G 029 - Gris Tourterelle
HPL, SGL, MFC LV 0.53



G 031 - Genet
HPL, SGL, MFC LV 0.58



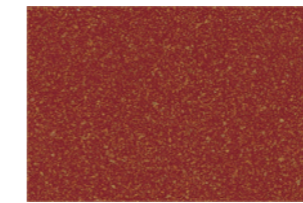
G 044 - Gris Dauphin
HPL LV 0.55



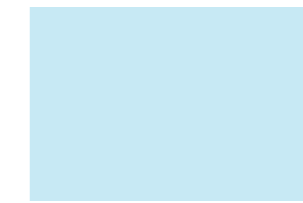
H 025 - Pommier de Honfleur
HPL, SGL LV 0.46



V 051 - Volans Noir
HPL, SGL LV 0.11



V 052 - Volans Rouge
HPL, SGL LV 0.14



Y 023 - Heather Blue
HPL, SGL, MFC LV 0.77



2009 - Zebrano Ambre
HPL LV 0.15